

Parklands
@CLARENDON

The Parklands
Clarendon team
has over 100
years combined
experience

Parklands
@CLARENDON



About Us

The Parklands Clarendon team has over 100 years combined experience in the Real Estate development sector that spans SE Asia, Australia and Europe. Our company strategy is built on giving clients what they want – not just creating homes and spaces to live in but changing the areas we develop and adding value to those who live there. We understand that to create success we need to partner with the best in the business and so our team of consultants are some of the best in their specialist fields and share the same passion we do.

Peter Brown



Peter Brown

Senior Project Director

Peter is responsible for the overall management of the projects entire lifecycle and holds the position of Senior Project Director at Parklands Clarendon. With over 20 years' experience in the property and construction industry Peter brings a wealth of expertise and knowhow. Having worked at a local, interstate and international level within finance, property and construction, Peter has a sound knowledge of the property development industry and civil construction process both at a strategic and hands on level. His experience ranges from managing a mid-sized successful property development business to CEO of an integrated property and civil construction business that had annual profits exceeding \$25m.

Industry networks, board appointments & community positions;

- Served as a Board Member and Director of many companies across a range of industries and organisations
- Director of a number of Satterley Boards
- Member of Real Estate Institute of Western Australia, Property Council of Australia, Urban Development Institute of Australia, Housing Industry Association (WA) and corporate member of West Coast Eagles Football Club and Marmion Angling and Aquatic Club

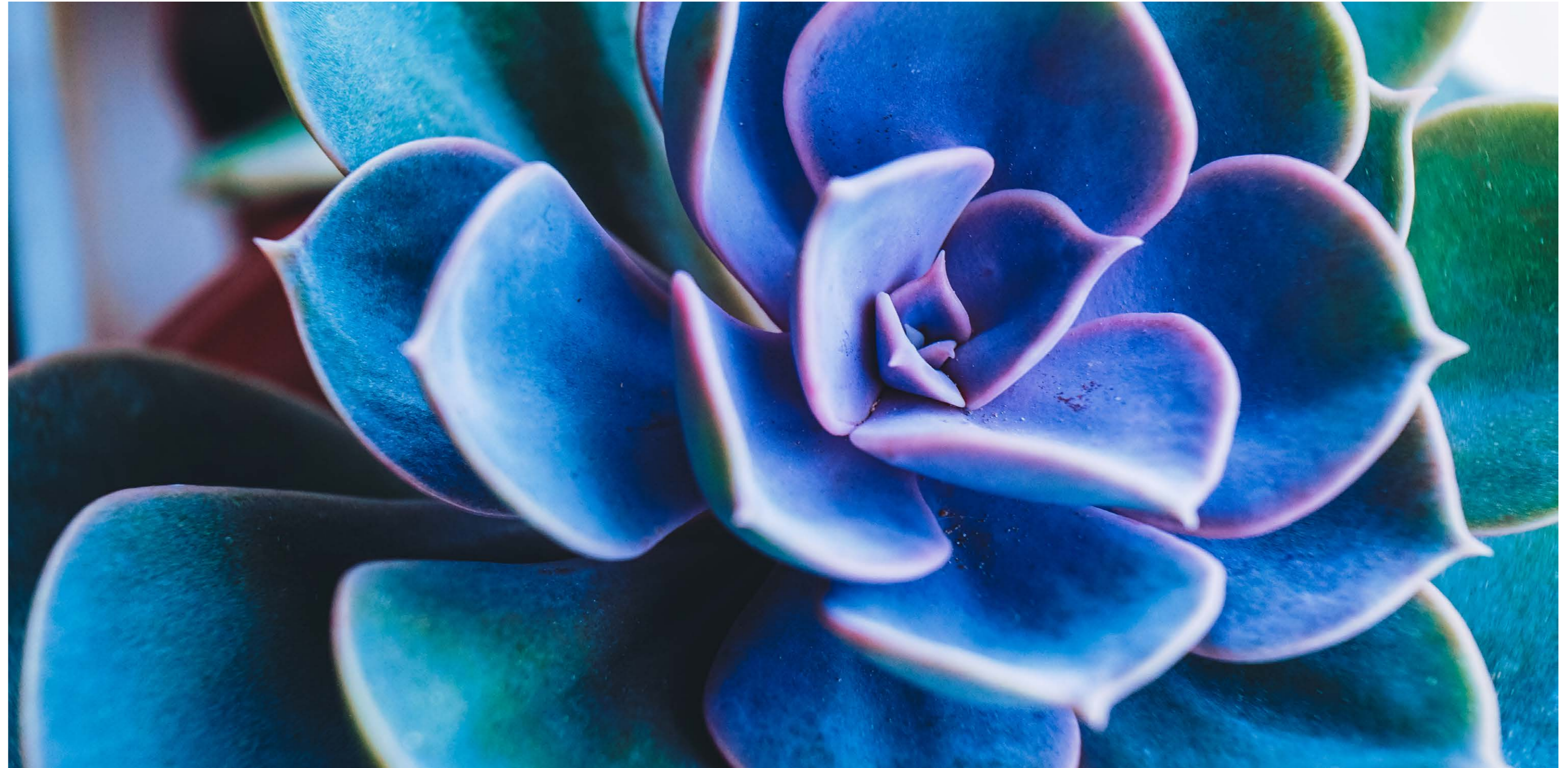
Live

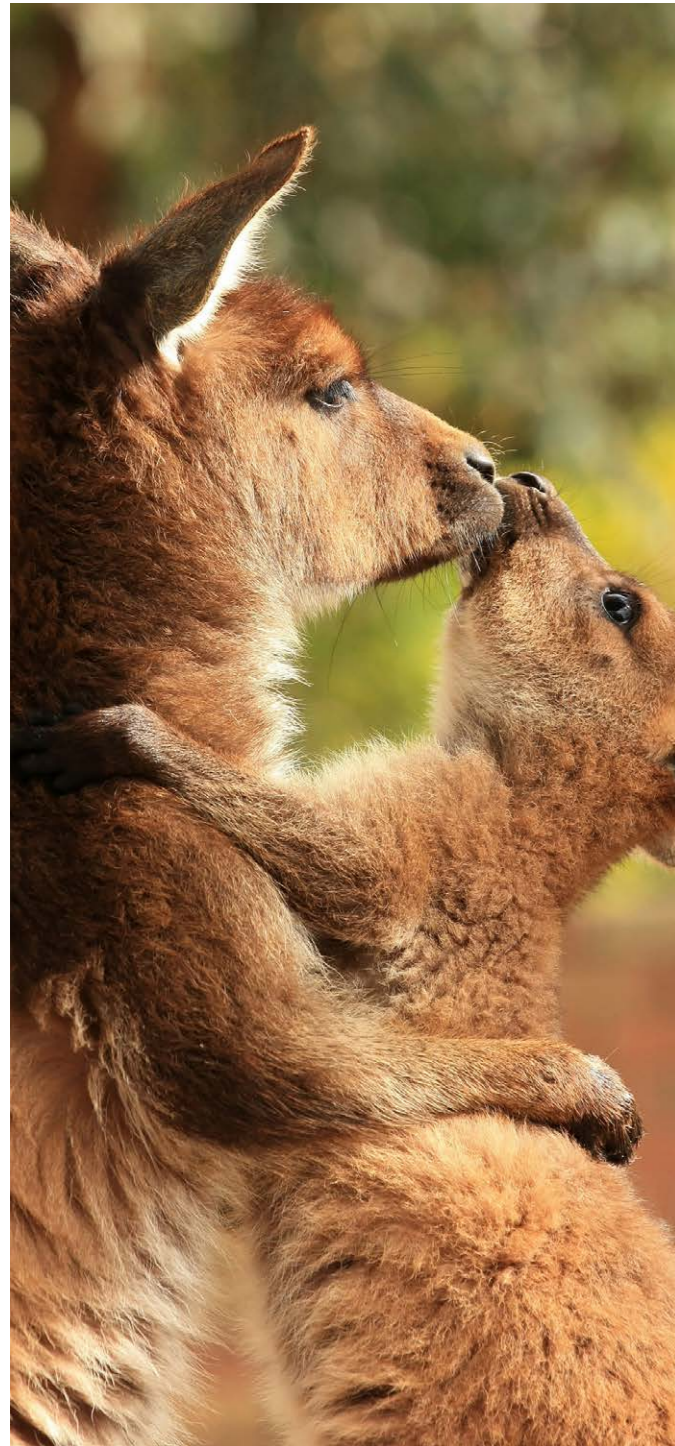
■ A Lifestlye Concept

Live in a neighbourhood surrounded by greenery.

In choosing to build less than the urban plan allows for, the creators of Parklands have opted for quality over volume. This fits entirely within the vision to make it a luxury 21st century community where owners are surrounded by private parkland zones.

Their designs incorporate native plants that are not only fragrant and beautiful, but also in harmony with local water resources.





Work

A Fantastic Place to Work & Live

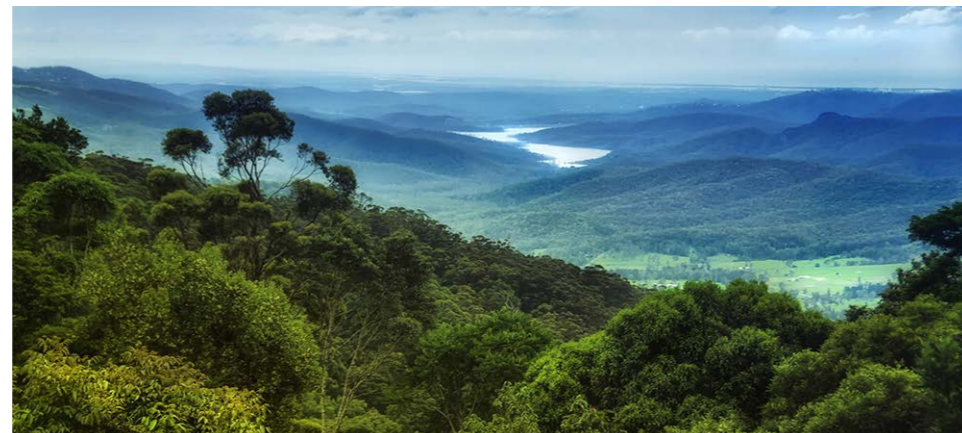
Most property developments in the area are made up of relatively small projects lacking a central concept, infrastructure and master plan. Having all of these elements makes Parklands unique, and allows us to incorporate not only exceptional facilities and beautiful green breathing spaces all around your home, but also to add unique features. With business thriving in Brisbane, it's no surprise that more people are flocking to the area to work. Some of Australia's biggest companies are based in the Brisbane not to mention one of Australia's largest military bases which employs over 8,000 people and contributes hugely to the areas demand on housing

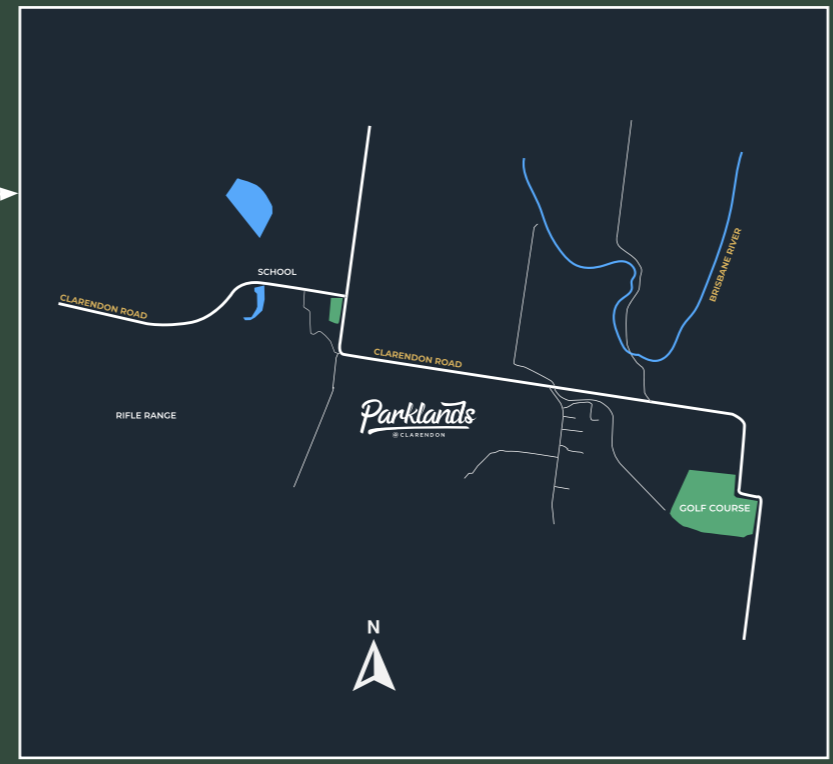
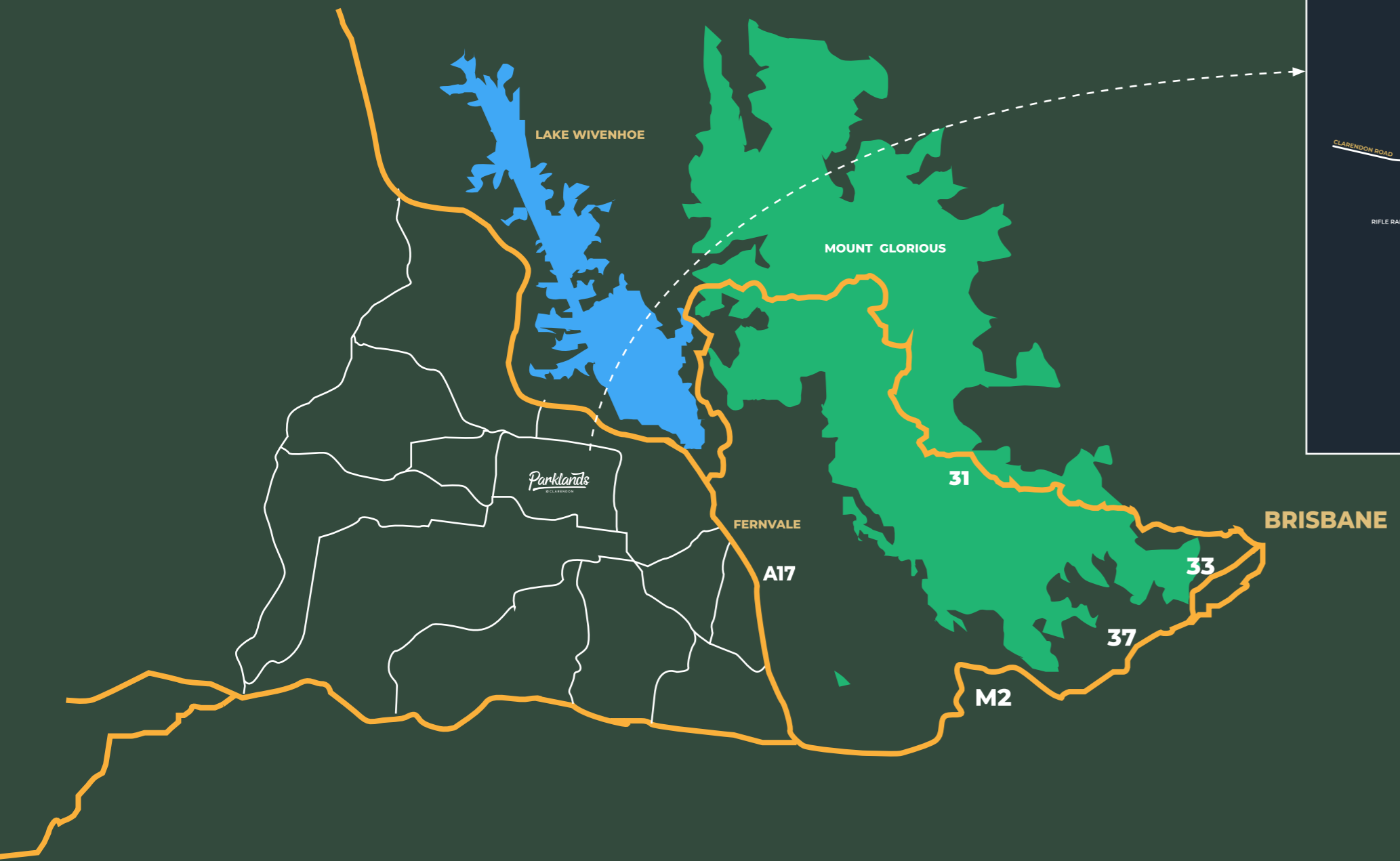


Play

| A Lifestyle Concept

Queensland's capital Brisbane (or "Brissie" as the locals refer to it) is a major international hub and is one of Australia's fastest-growing cities. Thanks to its ideal subtropical climate and an average of 283 days of sunshine every year, Brisbane is also a mecca for outdoor enthusiasts...with some of the most attractive beaches, prestigious golf courses, and scenic hiking trails Australia has to offer, it's no wonder thousands of people are flocking to Brisbane every month and making it their new home.





The Perfect Location

Strategically Positioned

Parklands is designed around a living concept that responds to today's work and lifestyle schedules – smoothly facilitating them by providing for all modern-day needs, but also creating an ideal setting in which to relax and unwind surrounded by peace and nature.

Close to major road networks yet sheltered from them, Parklands is within a 40 to 50-minute drive to Brisbane CBD and the Airport. Alternatively, you can also be on the beach, golf course or enjoying a wide array of sports and pursuits within a short drive. This is a place to clear your mind and re energise.



Plot Plan

Emmerse Yourself in a Beautiful Setting

This inspiring living environment set amidst the countryside is innovative and different because it was created from a fresh concept but with a deep understanding of local demand and emerging global trends. We listened carefully to client feedback, so our award winning Town Planners – Saunders Havill designed a unique plot layout allowing for uninterrupted views and the feeling that you are one with nature.



Parklands Village

A Lifestyle Concept

The new and exclusive community sports club and facilities will be well located in a central location on the estate, where clients will be able to gain a private family membership with the first 3 years included with the purchase of your property at Parklands at Clarendon. The sports club occupies a spacious 4,895sqm and includes a family swimming pool, tennis court and bowling greens, residents will also enjoy access to scenic BBQ and picnic areas which enjoy free WiFi, while children will enjoy the specially designed play area which adjoins.

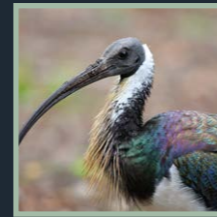
- Swimming pool
- Gym
- Tennis court
- Bowling green
- Barbecue facilities
- Seating area
- WiFi access

Subject to shire statutory approvals

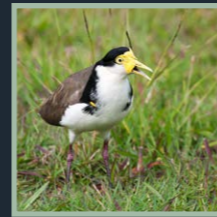


Nature Reserve

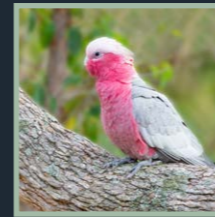
Parklands
@CLARENDON



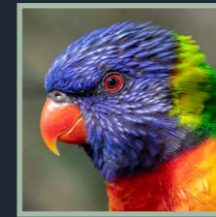
Straw-necked Ibis



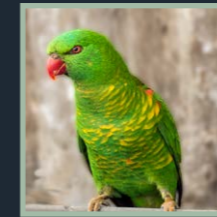
Masked Lapwing



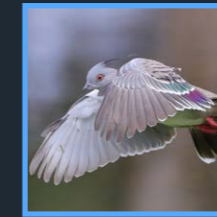
Galah



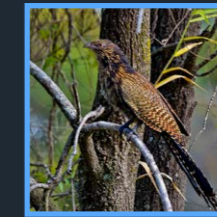
Rainbow Lorikeet



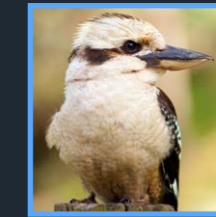
Scaly-Breasted Lorikeet



Crested Pigeon



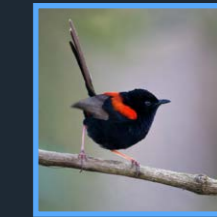
Pheasant Coucal



Kookaburra



Superb Fairy-Wren



Red-backed Fairy-Wren



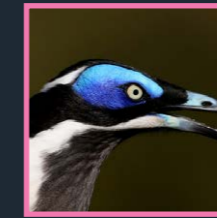
Yellow-Rumped Thornbill



Striated Pardalote



Little Friarbird, Noisy Miner



Blue-Faced Honeyeater



Brown Honeyeater



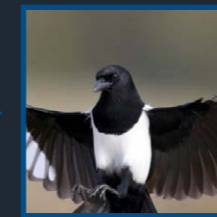
Striped Honeyeater



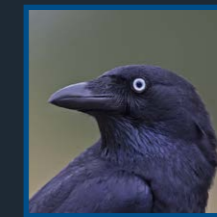
Figbird



Grey Butcherbird



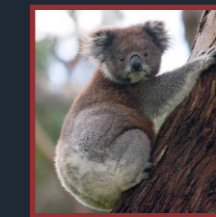
Magpie



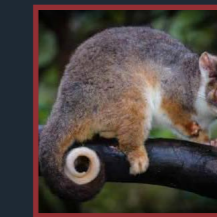
Torresian Crow



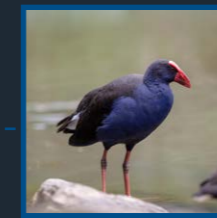
Welcome Swallow.



Koalas



Ringtail Possums



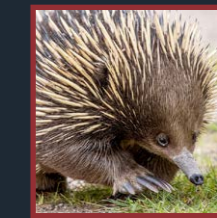
Purple Swamphen



Sugar Gliders



Bandicoots



Echidnas

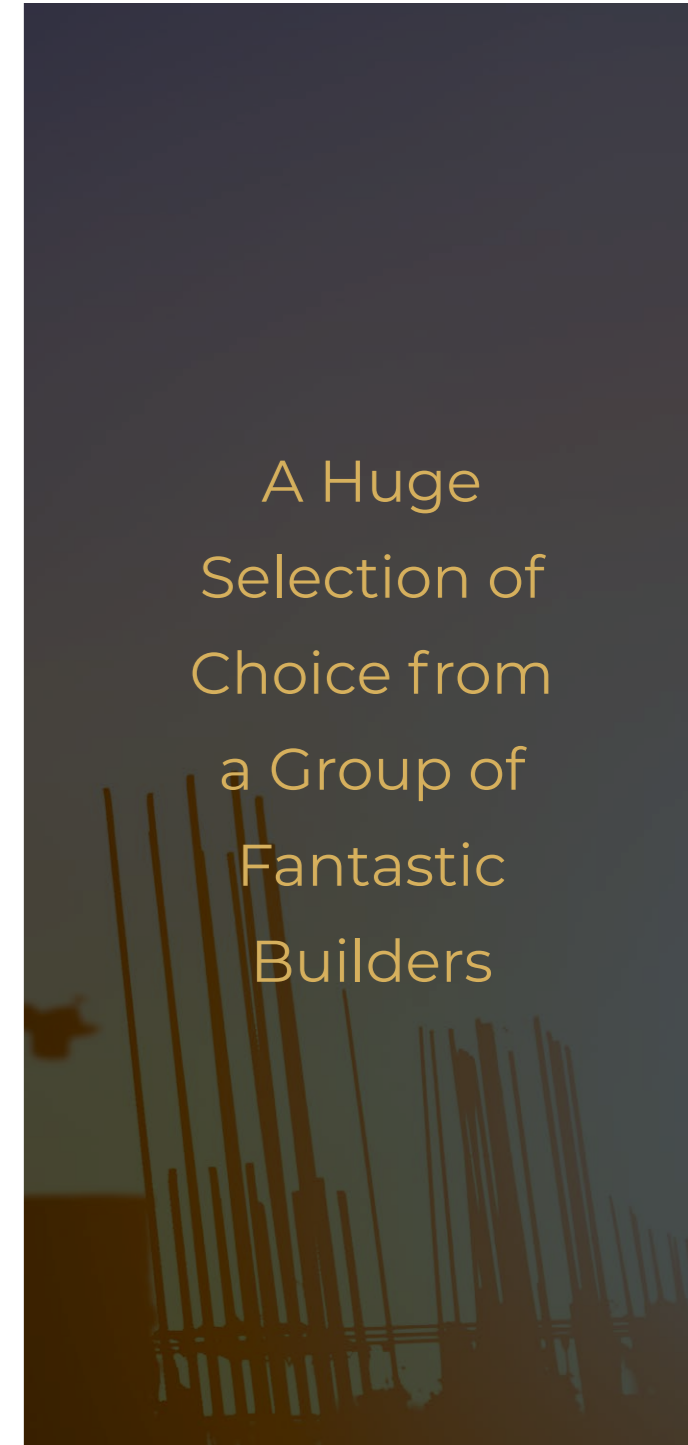
Our Builders

| The Best in the Business

At Parklands we have assemble a team of builders that are the best in the business. Each builder has a variety of houses within their portfolio which allows our clients a huge selection of choice.



A Huge
Selection of
Choice from
a Group of
Fantastic
Builders

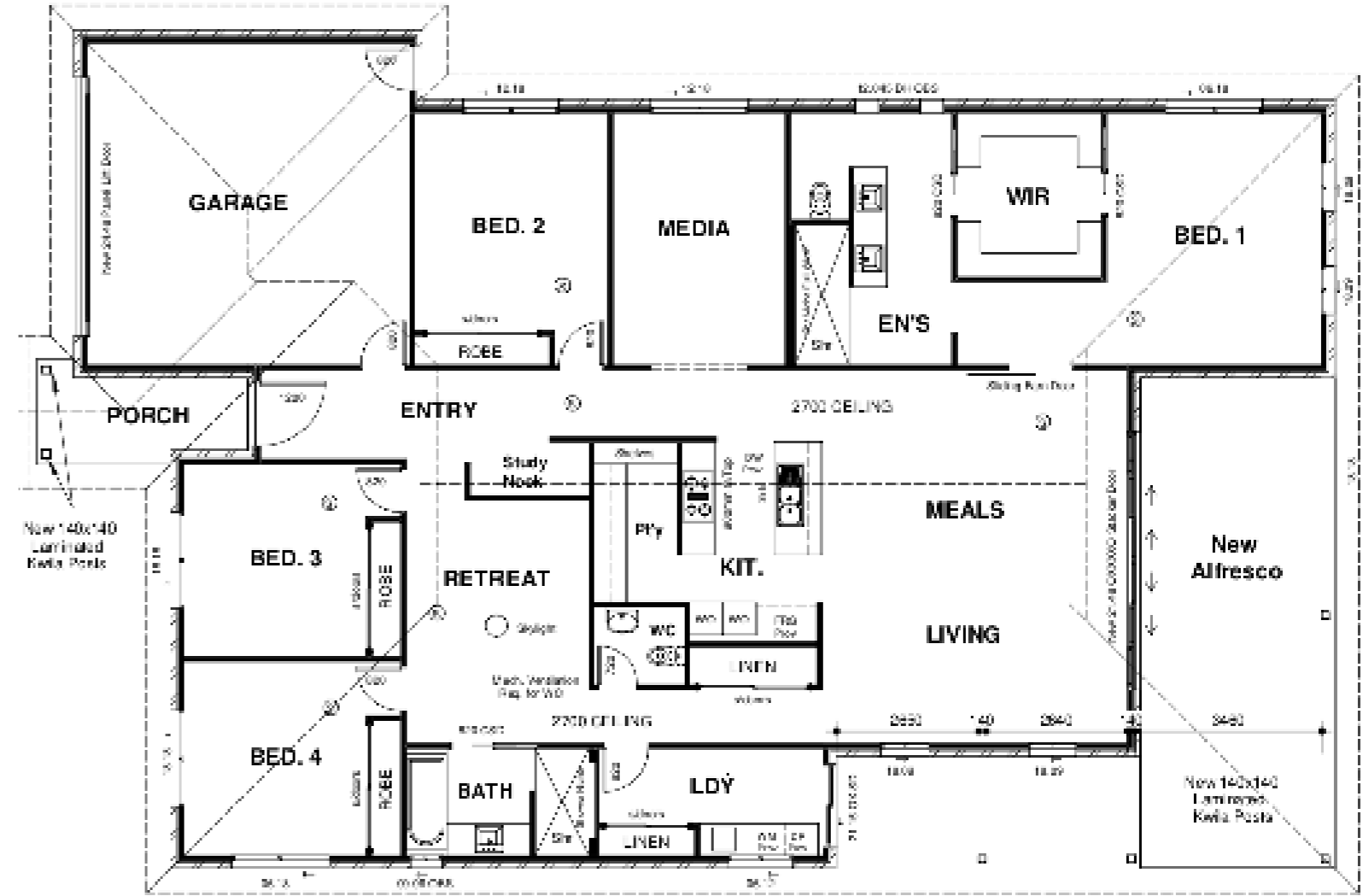




Seejay Homes

Through the years, we have built countless spacious living areas, large master bedrooms, convenient butler's pantries, expansive en-suites, practical laundries, extra living spaces for young kids and generous entertainer's balconies.

We build homes with all the things you want and need.





Bold Living

The art of living well is to enjoy a life that fulfills all dreams and desires. You and your family will be delighted to call a Bold Living home your own. From the moment you move in, and for years of happy living to come.

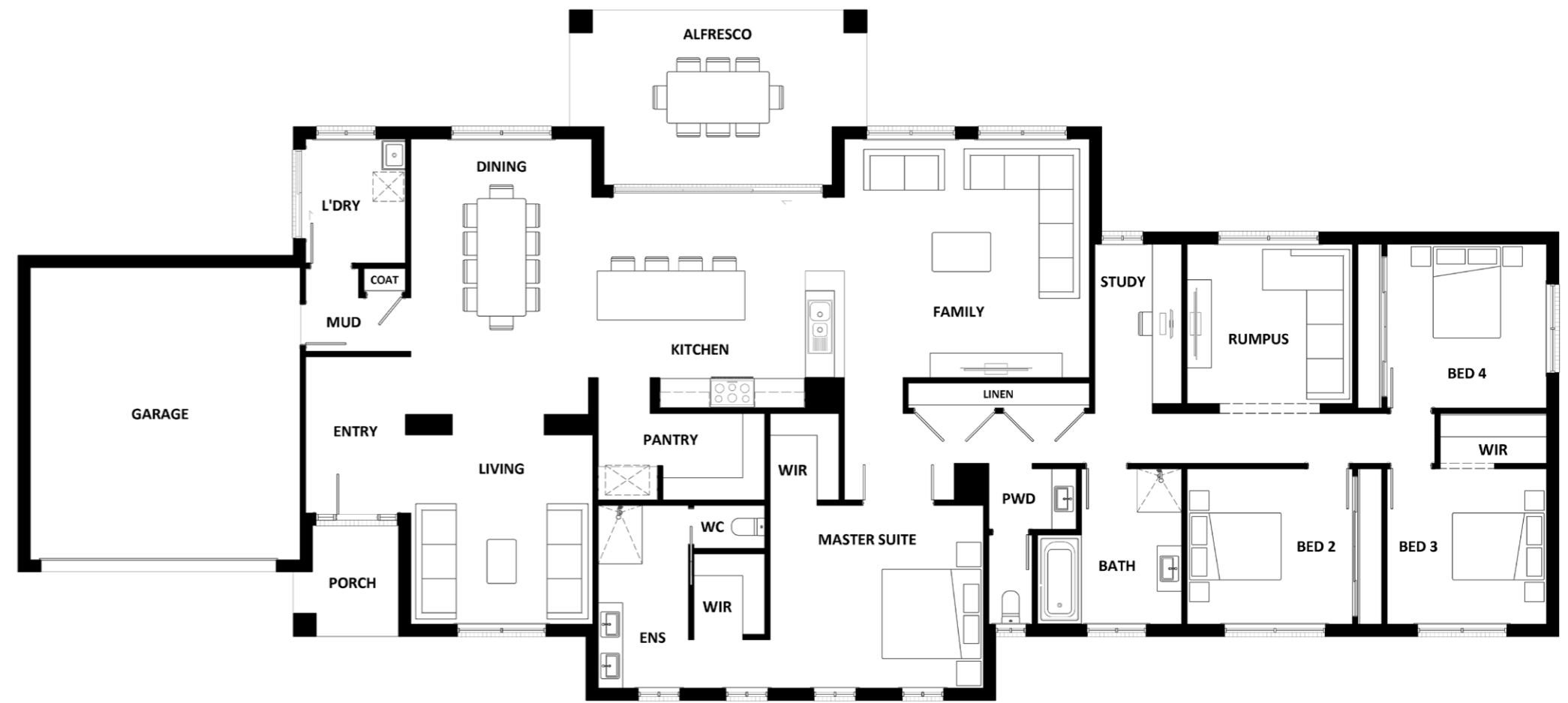




Hotondo Homes

If you're after a team you can trust to build your new house, look no further than Hotondo Homes. We're a family owned business who take pride in each home that we build.

As each Hotondo Homes builder is independently owned and operated, they have their own reputation to uphold, which is why we're such a reputable building company. We offer the local area knowledge and customer service of a local builder, combined with the affordability and range of flexible new house designs of a large building network.

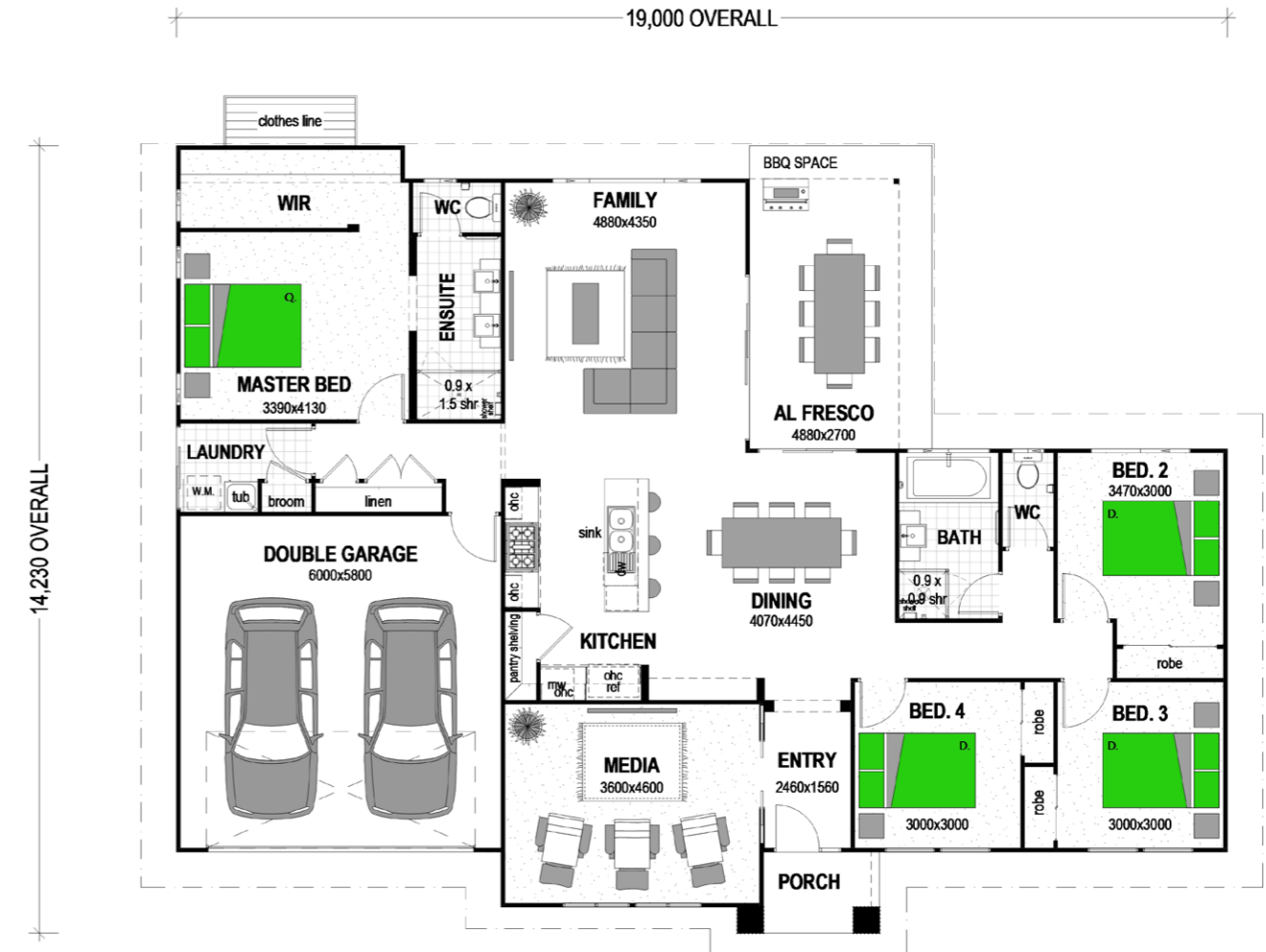




Stroud Homes

Our **award-winning** home designs start with us finding out what home buyers want. This means you're sure to find a design which suits your land, your budget and family. Plus, we can change our plans to suit you. We offer a **custom design service** to tailor the perfect house design for your needs. Learn more about how **building with Stroud Homes is the best decision you'll make.**

SESSION ONLY





G&P Builders

Our small and passionate team offer a transparent, dedicated and individual experience. We ensure integrity and honesty are at the forefront of your building experience. Throughout all stages of the building process, we strive to create products that deliver quality and value for money.



Our Partners





DISCLAIMER: While The Agent makes every effort to ensure that information provided to you ("You") is accurate and complete, it is provided subject to the following:

The information is intended to assist You in deciding whether You wish to proceed with further investigation of a property and any property details are not an offer or contract, or part of one;

You should not rely on statement (oral or written) made by The Agent or any person engaged by them, whether generally or specifically, in relation to any property, its value or condition, as being factually accurate and no explicit or implicit guarantee as to accuracy is given.

The Agent acts as preliminary information providers only and neither The Agent nor any person engaged by them in whatever capacity has any authority to make any representations or warranty, express or implied, in relation to a property. You must satisfy yourself regarding all aspects concerning a property including (by way of example but not limited to), its condition, value or suitability for your intended purpose, before You enter into a legally binding commitment to purchase the same by undertaking your own searches, enquiries, surveys and inspections as well as taking all appropriate advice from qualified professionals including lawyers, accountants, architects and surveyors.

Photographs of a property are as they appeared at the time they were taken and may be illustrative only and not definitive. For example, a photograph may be illustrative of a typical property to be found in a particular part of Australia. Currency conversions, if given, are illustrative only and will fluctuate from time to time. It is for You to satisfy yourself regarding the accuracy and "up to date" position of any financial figures and currency exchange rates;

Drawings, measurements and any reference to distances are approximate only.

All information in this document is subject to change at any time.

The Agent, as far as applicable laws allow, shall under no circumstances be liable to You, whether in contracts, tort (including negligence), breach of statutory duty, or otherwise, for any loss of property, or any indirect or consequential loss arising under or in connection with any information we provide to You.